

## INSTALLATION SERIES



## INSTALLATION SERIES

---

It's all about the user  
experience

Flat panel stands and trolleys  
with maximum user-friendliness  
and a luxurious appearance.



# A user oriented, uncomplicated and uncluttered working environment



## All connections within easy reach

The Installation Series is all about flat panel mounting with maximum user-friendliness and a luxurious appearance. Not just use-friendly, but with a full focus on the user, enabling him to work well.

The main feature of the Installation Series stands and trolleys is the standard Panel Integrator. This integrator allows to integrate

up to four standard size power sockets, audio visual control panels, USB ports or power outlets into the Installation Series column at the desired height. Do you need more connections within easy reach? No problem, just add an additional panel integrator which is available as an accessory as well.

### No disturbing cables in sight and a solution for every room

Install your cables in the Installation Series column's dedicated cable compartment and clip in the supplied cable cover strips. Cables remain easily accessible, but do not disturb the view.

The Installation Series offers a solution for every room thanks to the wide variety of installation options: freestanding, on wheels, fixed to floor / wall / ceiling and in a videoconferencing set-up. All solutions are available in luxurious aluminium and stylish black color schemes.



### Suitable for any person and screen

Integration is easy for everyone: simply adjust the monitor to accommodate the best working height by sliding the mounting head and securely fixating it in the desired position.

Combined with one of our universal wall mounts the Installation Series fits any screen.





## Stands and trolleys



### FLOOR STAND

	<b>Colours</b>	
	<b>Max. load</b>	85 kg
	<b>Max. inch</b>	90 inch
	<b>Position</b>	Landscape & Portrait
	<b>Certified</b>	TÜV 5
	<b>Accessories</b>	See page 8
	<b>Note</b>	170 x 140 modular mounting
	<b>Required</b>	Universal wall mount, see page 9

Article code	Colour
062.4425	Aluminium & Black
062.4425.01	Black



### TROLLEY

	<b>Colours</b>	
	<b>Max. load</b>	85 kg
	<b>Max. inch</b>	90 inch
	<b>Position</b>	Landscape & Portrait
	<b>Certified</b>	TÜV 5
	<b>Accessories</b>	See page 8
	<b>Note</b>	170 x 140 modular mounting
	<b>Required</b>	Universal wall mount, see page 9

Article code	Colour
062.4450	Aluminium & Black
062.4450.01	Black

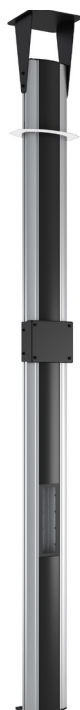
## Floor-wall/ceiling mounted columns



### FLOOR-WALL COLUMN

	<b>Colours</b>	
	<b>Max. load</b>	100 kg
	<b>Max. inch</b>	90 inch
	<b>Position</b>	Landscape & Portrait
	<b>Certified</b>	TÜV 5
	<b>Accessories</b>	See page 8
	<b>Note</b>	170 x 140 modular mounting
	<b>Required</b>	Universal wall mount, see page 9
	<b>Other info</b>	Different colours and lengths on request

Article code	Colour
063.4440	Aluminium & Black
063.4440.01	Black



### FLOOR-CEILING COLUMN

	<b>Colours</b>	
	<b>Max. load</b>	100 kg
	<b>Max. inch</b>	90 inch
	<b>Position</b>	Landscape & Portrait
	<b>Certified</b>	TÜV 5
	<b>Accessories</b>	See page 8
	<b>Note</b>	170 x 140 modular mounting
	<b>Required</b>	Universal wall mount, see page 9
	<b>Other info</b>	Different colours and lengths on request

Article code	Colour
063.4445	Aluminium & Black
063.4445.01	Black

## Videoconferencing stands and trolleys



### FLOOR STAND 2x 46-55 INCH incl. 2 supports

	<b>Colours</b>	
	<b>Max. load</b>	85 kg
	<b>Max. inch</b>	2x 46-55 inch
	<b>Position</b>	Landscape & Portrait
	<b>Accessories</b>	See page 8
	<b>Other info</b>	Incl. 2 mounting bars, 2 sets mounting arms, 1 mounting head and 2 small supports

Article code	Colour
<a href="#">062.4525</a>	Aluminium & Black
<a href="#">062.4525.01</a>	Black

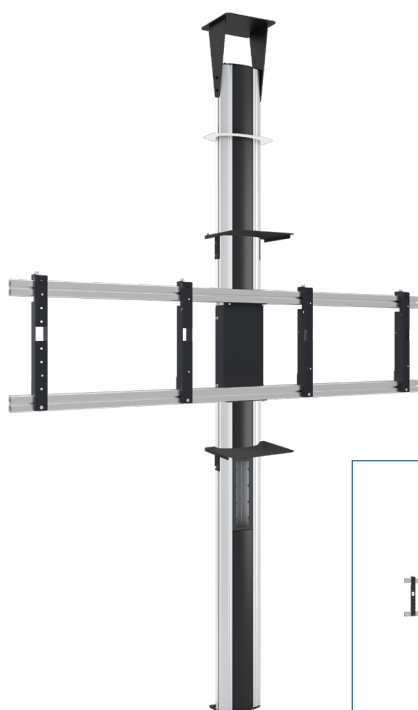
## Videoconferencing floor-wall/ceiling mounted columns



### FLOOR-WALL COLUMN 2x 46-55 INCH incl. 2 supports

	<b>Colours</b>	
	<b>Max. load</b>	100 kg
	<b>Max. inch</b>	2x 46-55 inch
	<b>Position</b>	Landscape & Portrait
	<b>Accessories</b>	See page 8
	<b>Other info</b>	Incl. 2 mounting bars, 2 sets mounting arms, 1 mounting head and 2 small supports

Article code	Colour
<a href="#">063.4540</a>	Aluminium & Black
<a href="#">063.4540.01</a>	Black



### FLOOR-CEILING COLUMN 2x 46-55 INCH incl. 2 supports

	<b>Colours</b>	
	<b>Max. load</b>	100 kg
	<b>Max. inch</b>	2x 46-55 inch
	<b>Position</b>	Landscape & Portrait
	<b>Accessories</b>	See page 8
	<b>Other info</b>	Incl. 2 mounting bars, 2 sets mounting arms, 1 mounting head and 2 small supports

Article code	Colour
<a href="#">063.4545</a>	Aluminium & Black
<a href="#">063.4545.01</a>	Black

# ACCESSORIES



## PANEL INTEGRATOR for 1 to 4 sockets

The Panel Integrator bracket can be set up to accommodate for one up to four audiovisual control panels, USB ports or power outlets into the Installation Series column at the desired height. The Panel Integrator kit includes different frames to cover the Panel Integrator bracket, for a well finished result.

**063.4400**



## LAPTOP SUPPORT Surface 390 x 310 mm

**063.0100.01**



## LAPTOP SUPPORT Surface 300 x 189 mm

**063.0110.01**



## VC SET

This set consists of two mounting bars, four mounting arms, a mounting head and two supports and is intended to expand your Installation Series single screen solution to a VideoConferencing set-up.

**063.4410**



## MINI-PC/ THIN CLIENT HOUSING max. 397 x 218 x 100 mm, lockable

Your mini-PC is safely installed and protected from theft and vandalism in this solid steel housing. Cables can be run through the upper side into the column and the housing can be continuously adjusted in height.

**063.0710.01**

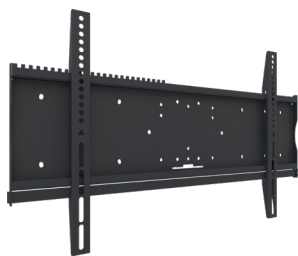


# UNIVERSAL WALL MOUNTS



**Max. 446 x 400 mm**  
Landscape use

**052.1000**



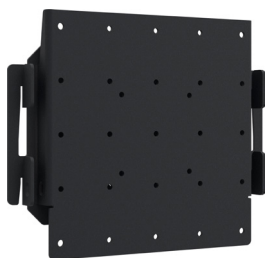
**Max. 816 x 480 mm**  
Landscape use

**052.2000**



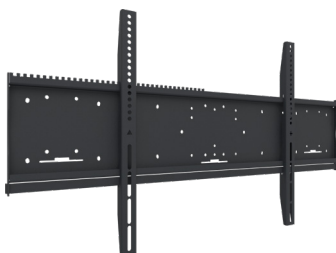
**Max. 812 x 600 mm**  
Landscape use

**052.2010**



**Max. 200 x 200 mm**  
Landscape use

**052.4000**



**Max. 1110 x 600 mm**  
Landscape use

**052.6000**



**Max. 444 x 600 mm**  
Portrait use

**052.1010**



**Max. 444 x 900 mm**  
Portrait use

**052.1040**



## INSTALLATION SERIES



### Address

SmartMetals Mounting Solutions B.V.  
Vlietskade 8016  
4241 WS ARKEL  
The Netherlands



### Telephone

+ 31 (0)88 70 60 100



### Email & Website

info@smartmetals.nl  
www.smartmetals.nl

## 2020 Product Folder - Installation Series

The information contained in this folder is to be used only as a guide to assist with product selection. The products features set forth in this folder are subject to change due to product innovations. Please consider information on our website [www.smartmetals.nl](http://www.smartmetals.nl) in any case leading.