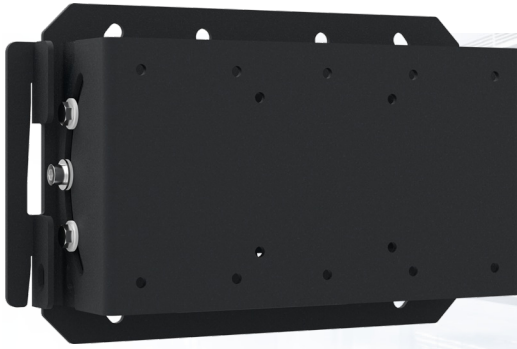


Tiltbare VESA wall mount



052.3050 EOL | Tilttable VESA wall mount (VESA 75, VESA 100, VESA 200-100)

All universal wall mounts are VESA compatible. Besides wall mounting, all our wall mounts can be used for ceiling mounting in combination with a tube set, and directly fastened to the stands thanks to its 170 x 140 mm mounting pattern. The mounts include fastening material, to secure the mount to the display. Furthermore they include a safety bar or fixation, offering you protection from theft; a padlock is to be added separately.

**This product is "End of Life" and will no longer be produced.
It can be supplied as long as stock lasts.**

Tiltbare VESA wall mount

Features

Weight: 3.00 kg

Colour: Black

Maximum load: 40 kg

Screen position: Landscape

Type bracket/interface: VESA

Range bracket/interface: VESA 75, 100, 200-100

Tilt function: +13° till -13°

Mounting system: 170 x 140 mm

